

Chapter 3 Software Setup

Drivers, Utilities and Software Installation

- Support CD:

This mainboard will always be shipped with a Support CD which contains those necessary driver files, Application Softwares and some helpful utilities. It is a user-friendly, auto-run CD which will open itself up in a CD-ROM automatically.

This chapter is devoted to describing the installations of all these essential drivers and utilities on Windows 9X, Windows ME, Windows 2000 and Windows XP. The installation procedures for all these operating systems are all programmed into an auto-run mode. What users have to do is to read and follow the pop-up instructions to carry out the installation. We therefore take the installation on Windows 98 as the general illustration hereby.

The priority of drivers to be installed should also be noted. Users are recommended to take the following installation orders :

3-1 Open up the Support CD

3-2 Intel Chipset Software Installation Utility (INF Utility)

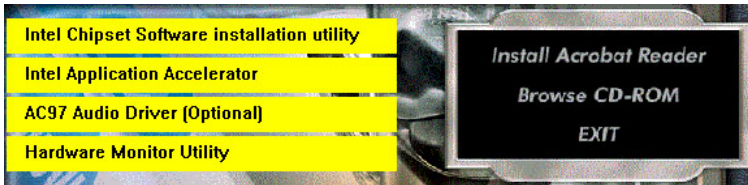
3-3 Intel Application Accelerator (IAA)

3-4 AC'97 Audio Drivers Installation

3-5 Hardware Monitor Utility

3-1 Open up the Support CD

1. Please put the Support CD enclosed in your mainboard package into the CD-ROM drive. In a few seconds, the Main Menu will automatically appear, displaying the contents to be installed for this mainboard:



2. In case your system does not open the Support CD automatically, please click to the following path to enter the Main Installation Menu:

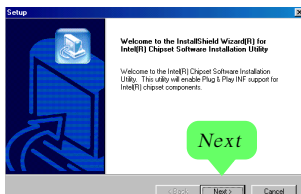
D:\Autorun.exe (assuming that your CD-ROM Drive is Drive D)

3. We should take “Intel Chipset Software installation Utility” as first installation priority to optimize the Intel system.
From next section, we provide detailed descriptions of all these installations with graphical illustrations.

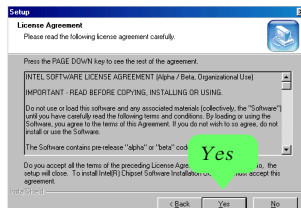
3-2 Install “Intel Chipset Software Installation Utility”

1. Following the procedures of opening the Support CD, click to “ Install Intel Chipset software installation Utility” to proceed.

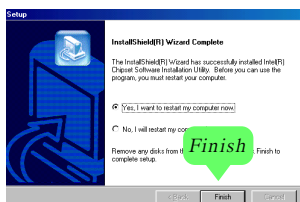
2. The Intel Service Pack InstallShield Wizard will pop up to guide you to the Intel Service pack installation. Press “Next” button to continue.



3. “Intel Software License Agreement” screen will appear, please click the “Yes” button to agree with the Licence Agreement and continue.



4. After all the setup process is finished, please restart your computer by clicking on “Finish” so as to take the Utility into effect.

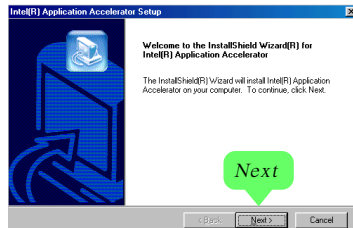


3-3 Install “Intel Application Accelerator”

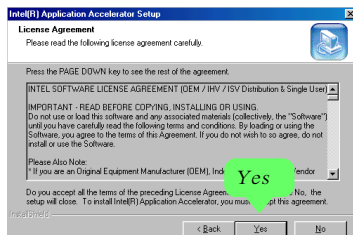
IAA supports all Windows 98/98se/Me/NT4/2000/XP with Pentium III / 4 processor. Installations of this software for these operating systems are similarly programmed to an auto-run mode. It is typically designed to improve performance of the storage sub-system and overall system performance. Below is a model installation on Windows 98. Users of Windows Me/NT4/2000/XP can also follow this example for IAA installation.

1. Following the procedures of opening the Support CD, click to “ Intel Application Accelerator” to proceed.

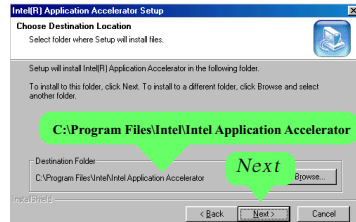
2. On the “InstallShield Wizard” screen, Click on “Next” to continue.



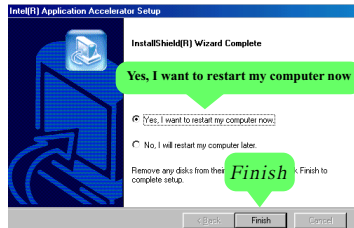
3. On the “Licence Agreement” screen, click on “Yes” to continue.



4. On "Choose Destination Location" screen, press "**Next**" to continue.



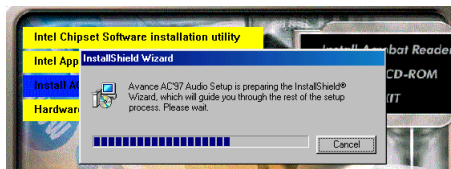
5. On "InstallShield Wizard Complete" screen, choose "Yes, I want to restart my computer now" and press "Finish" to restart. Remember you must restart computer to put setup into effect.



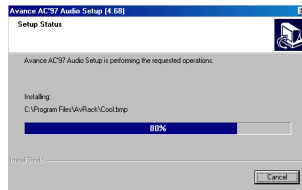
3-4 AC'97 Audio Driver Installation

Avance AC97 Audio Codec on board, AC'97 2.1 compatible stereo audio code for PC multimedia systems. Avance AC'97 Audio Codec Driver is provided in Support CD for user's installation.

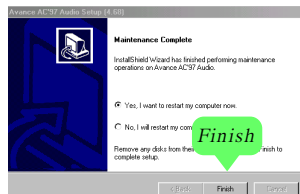
1. Following the procedures of opening the Support CD, click to "AC'97 Audio Driver" to proceed.
2. Instantly, the "installShield Wizard" screen appears to guide you through the "Avance AC'97 Audio Setup".



3. Instantly, the Setup program proceeds to install the softwares which include AC'97 driver and AVRack. (If you want to stop setup, click the "Cancel" button.)



4. After the setup process is finished, please check the radial button "Yes, I want to restart my computer now." And click "Finish" to restart your system.



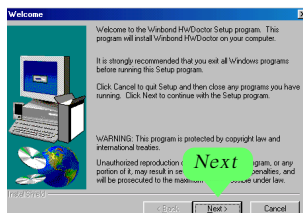
3-5 Install Hardware Monitor Utility

3-5.1 Installation

Hardware Monitor is built on this mainboard. Its installation is programmed to a fully automated mode on Windows 9X/Me/NT4/2000/XP. User can follow the model installation below for its installation on various Windows System.

1. Following the procedures of opening the Support CD, click to “Hardware Monitor Utility” to proceed.

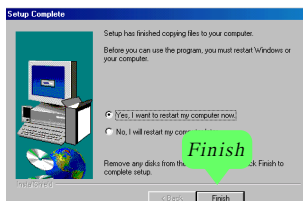
2. Instantly the “InstallShield Wizard” screen appears to help you through the setup. Click “Next” to continue.



3. Next, the Setup Program will suggest to you the destination directory where the “HwDoctor” will be installed. Select the Program folder and click “Next” to continue.

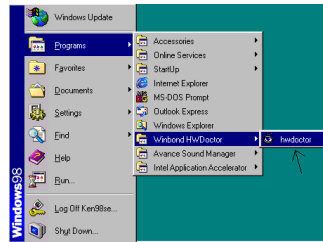


4. On the “Setup complete” screen, click “Finish” to restart your computer so that the Utility can be put into effect.



3-5.2 Verification

1. After restarting your computer, click “Start” and choose the path Programs \Winbond\HWDoctor to open the main window of the Hardware Doctor.



2. The “Voltage/CaseOpen” window is for CPU voltage and temperature information.
 The “Fan/Temperature” window is for fan speed and temperature information.
 The “CPU/Memory” window is for processor and memory information.

“Voltage/Case Open” button

“Fan/Temperature” button

“CPU/Memory” button

