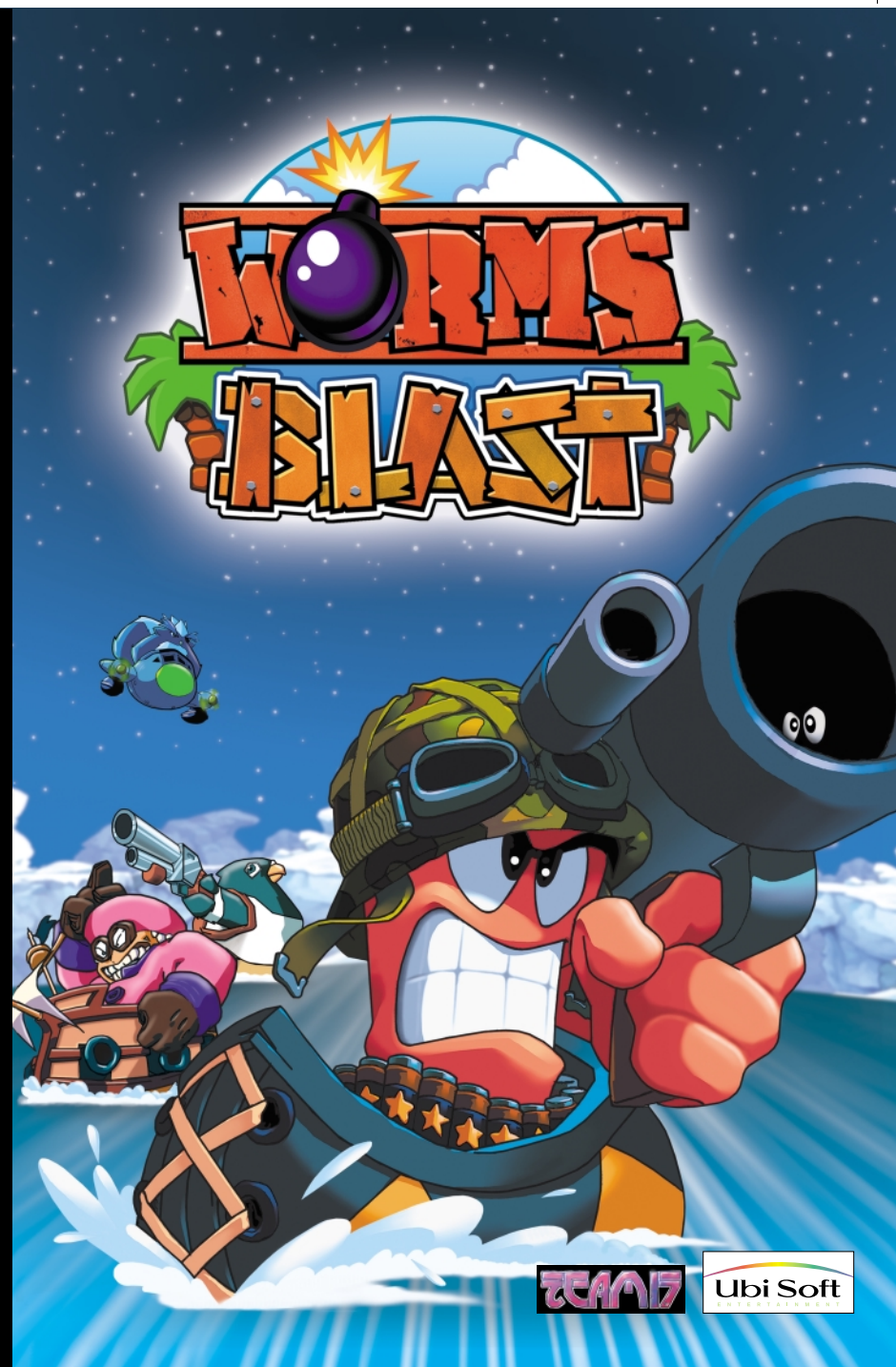


Worms Blast © 2001 Team 17 Software and Worms are registered trademarks of Team 17 Software Limited.
Published under license by Ubi Soft Entertainment. Original Concept Andy Davidson All rights reserved.



seven
Seven Soho

U00318

Client: UBI SOFT
First Proof: 14.01.02

Title: Worms Blast
Product: PS2 Manual Cover (UK)



C



M



Y



B



P877



Table of Contents.

| | |
|---|-----------|
| Introduction | 2 |
| Specifications / Installation | 3 |
| The Game | 4 |
| General, Character Control, Default Control, Gameplay | |
| The Menus | 4 |
| Main Menu, Puzzle, Tournament, Vs Mode, Options Menu, Game Options, Sound Options, Controller Options, Credits, Language, High Scores | |
| Game Mechanics | 9 |
| Land Blocks, Block Types, Stars, Crates, Colour Coding | |
| Weapon Types | 11 |
| Standard Weapon (Bazooka), Special Weapons, Water, Divider | |
| In-game heads up display (the HUD) | 16 |
| Blast Mode | |
| Game Characters | 17 |
| Character Profiles, Boggy B, Suzette, Chuck, Ethel, Calvin, Stavros | |
| Credits | 19 |
| Customer Support | 20 |



Introduction

Preheat your PC to a comfortable temperature before inserting the "Worms Blast" disc and lightly fluff your seat before settling down for the main course. Once comfortable, take the big chunk of puzzle- styled gameplay and slice into 60 fun-sized missions. Sprinkle with a fiendishly challenging puzzle mode, and mix in a tasty tournament mode, not forgetting to include the unlockable hidden features. Spread this mixture over a multiplayer head-to-head game guaranteeing fun for yourself and your friends, and allow to simmer....

When enjoyment is boiling, add in a generous helping of entertaining characters, boat-based silliness, fog, sea monsters and falling anvils. Add bazookas, dynamite and unprecedented destruction to taste.

This recipe should serve a truly hefty helping of fun.

Minimum Specification

- IBM PC Intel Pentium II 350Mhz and compatibles.
- Microsoft Windows9x, WindowsMe, Windows2000 or WindowsXP operating system.
- Microsoft DirectXTM 8.0a (supplied) or later.
- 64Mb System RAM.
- 110Mb Hard Drive Space. 300Mb free post-install (virtual memory).
- Quad-speed CD-ROM.
- Microsoft Direct3DTM compatible 16Mb video card.
- Microsoft DirectSoundTM compatible soundcard.

Recommended Specification

- IBM PC Intel Pentium III 450Mhz and compatibles or faster.
- Microsoft Windows9x, WindowsMe, Windows2000 or WindowsXP operating system.
- Microsoft DirectXTM 8.0a (supplied) or later.
- 128Mb System RAM.
- 110Mb Hard Drive Space. 300Mb free post-install (virtual memory).
- Eight-speed CD-ROM or faster.
- Microsoft Direct3DTM compatible 32Mb video card.
- Microsoft DirectSoundTM 16-bit compatible soundcard.
- Microsoft DirectInputTM compatible joystick.

Installation

To install the game, insert the Worms Blast CD into the CD-ROM drive when your PC has finished loading Windows®.

If you have Autorun disabled, double click your CD-ROM icon and installation will start.

During installation, follow the on screen prompts. The default location for WORMS BLAST is C:\Team17\Worms Blast

The Game

General

Worms Blast takes place on water which is lucky really as your character only has a boat to get around in. Above you, coloured blocks move closer to you every so often. Fortunately you can shoot the blocks to destroy them, however your weapon is colour coded and you must hit blocks of the same colour as your weapon to destroy them. Hitting a block of different colour from that of your weapon will recolour it (and the surrounding blocks) to the weapon's colour. If you destroy a block, blocks of the same colour touching the destroyed block will also be destroyed.

The single player game tests your skill and nerve in a series of solo puzzle-solving levels while the 2 player game pits you against another human or computer controlled player. In 2 player games, the play area is separated by a divider. This divider opens every so often to allow you to attack the other player with your weapons, which is nice!

Character Control

Controlling your character is simple. LEFT and RIGHT move the boat, UP and DOWN alter the trajectory of the character's weapon and FIRE fires the current weapon. The SWAP WEAPON button toggles between your standard weapon (i.e. Bazooka) and any special weapons you have picked up from crates.

Default Control

The default controls for Worms Blast are CURSOR KEYS for up, down, left and right; ENTER to fire and RIGHT SHIFT to swap weapon. ESCAPE will bring up the PAUSE menu (in-game) or take you to the previous menu in the frontend.

Gameplay

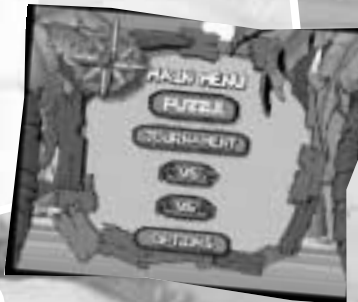
The gameplay in Worms Blast is dependant on the game type and mode you select. There are 3 different game types - Puzzle, Tournament and Vs (versus). The game modes within these different games dictate the rules of play i.e. what you have to do to win. For details of these, read on...

The Menus

Main Menu

Press any key on the title screen to activate the main menu. Here you can select which game type you want to play or access the options screen.

The different game types are: -



Puzzle

Selecting 'Puzzle' from the main menu takes you to the map screen (after selecting your character). You will notice your character at the bottom right of the map.



HINT: When first attempting the Puzzle levels, you will start off with a TUTORIAL set of puzzles. These puzzles will take the uninitiated player through the basics of play in Worms Blast, describing the use of the main weapons, how land blocks behave and how to play in general

Dotted around the map screen are various locations, represented by blue dots. The objective is for you to travel around the map, making your way to the volcanic island in the centre of the ocean. This seems simple, but there is a catch; between each location there are cunningly designed missions that you must undertake before being allowed onto the next location. To play, select your destination and press the FIRE button.

Whilst undertaking the missions, you have several options.

1. You can successfully complete them, in which case you will be returned to the map screen and your character will complete its journey to the chosen destination.
2. You can restart the mission at any time should you think you've messed up and would have a better chance of succeeding from afresh. PAUSE the game and select 'RESTART LEVEL' from the menu.
3. If you think the mission is too hard, you're stuck or you'd simply like to try a different mission (i.e. pick another route) you can PAUSE the game and select 'RETURN TO MAP SCREEN' from the menu.

NOTE: Progress on the map screen is automatically saved. The next time you return to the PUZZLE game, your characters map position will be as you left it.

HINT: The PUZZLE mode can be completed by visiting as little as 25% of the locations on the map. However, hidden in the more remote locations are unlockable characters and single and multiplayer game modes. It is well worth the time to travel around as much of the map as possible to unlock the games secrets. Also note the colour of the route you take: Blue indicates an easier route; Red indicates harder routes

Tournament

The objective in **TOURNAMENT MODE** is simply to last as long as you can in order to tot up the highest score possible which can then be entered into the **HIGH SCORE** table.

After selecting **TOURNAMENT** mode, you are presented with a list of available game modes to play. Each mode differs in what you have to actually do and each mode has its own entries in the **HIGH SCORE** table. Initially, there are 5 modes open for you to play, extra modes are unlocked by successfully playing the **PUZZLE** mode.

The 5 initial modes for you to play are:

1. Target Alley.

Shoot moving targets as they descend from the skies. Miss 20 of the little blighters and it's curtains!

2. Super Frogging.

Destroy all targets on screen, whilst skilfully avoiding moving obstacles, to receive your rewards. Lower the ever rising water by collecting the bonus STARS and keep going...

3. Team17 Fun.

Shoot stars as they descend from the foot of our giant company logo. Ignore the shameless advertising and shoot the stars to stem the rising tide of water. Avoid collecting them as this destroys you.

4. One Line.

Carve a path through the oncoming land. With every shot, the land descends a line and is added to your score.

5. Shooting Gallery

Shoot the targets as they fly across the screen to extend your round time. Be careful to avoid the red 'time penalty' blocks as they too streak across the screen.

Vs Mode

There are 2 choices for Vs (Versus) mode from the main menu. One for playing against the computer and one for playing against a human player. Choose the mode and choose your characters that you wish to battle with (the Computer will choose its own). **NOTE:** some modes are not available to play against the computer.

Which game mode you select determines the rules of the game that you will play. The available game modes are:

1. Deathmatch

Battle with your opponent until one of you runs out of spare boats. To aid your destructive urges, the central divider opens on a more regular basis giving you scope to constantly attack your opponent.

2. Star Collection

It's you against your opponent in a race to be the first to collect 5 STARS. Collect 5, and the game is yours! Destroying opponents STARS means less STARS for them to collect giving you more chance of winning.

3. Tide Trial

Collect the STARS to keep the ever rising tide low, keep the land at bay and use every opportunity to attack your opponent - sink them once and the game is yours!

4. One Line For 2

Crush your opponent before they crush you! Every time you and your opponent fire a shot, the land blocks fall down by one line.

5. Don't Drop Em.

Destroy all the land blocks above you to get to the Star at the top before your opponent. However, you must avoid any land becoming 'unstuck' from the main body of land and falling into the water. Only one block is allowed to fall into the water

6. Star Race

Guide your boat through the course destroying the obstacles in your path. The objective is to stay afloat and reach the Star at the top of the level before your opponent. Destroy the targets to pause the land on your opponent's side.

7. Survival

You must not let the land blocks touch the water in this mode (unless you have freed them first). The instant your land mass touches the water means game over and victory to your opponent.

8. Fight

This level differs from Deathmatch in that the **DANGER** stakes have been raised - none of the land is destructible and the majority is made up of **BOUNCY** blocks, meaning stray shots aimed at your opponent could easily bounce back to get you!



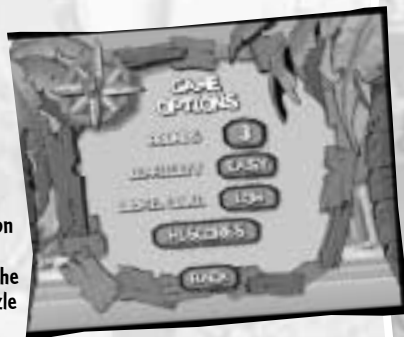
Options Menu

Here are the game options for you to configure to your liking. Highlight the option you wish to alter and press FIRE.

Game Options

Rounds: - Toggle to select how many rounds you have to win to win the match. The choices are best of 1, 3 or 5 rounds.

Clear Scores: - This restores the game's saved data to it's original state. **WARNING:** Selecting this option will lose any high scores and the position you may have reached on the Map Screen in the single player Puzzle game.

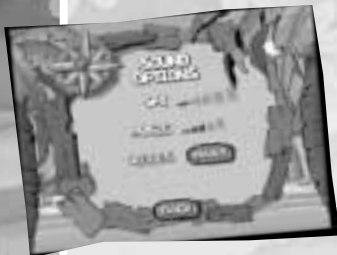


Sound options

SFX: - In game sound effects volume, use left and right directional buttons to move the volume up and down.

Music: - Use left and right to move the music volume up and down.

Voices: - Toggle between Many and Few to set how much speech / sound effects are used in-game.



Control Options

Use this screen to set up the desired controllers for players 1 & 2. Select the player whose controls you wish to edit, highlight which function i.e. LEFT, RIGHT etc. you want to edit, press ENTER and select the new key / button to be used for that function. **WARNING:** If you select a button used by the other players configuration, it will appear as **WHITE** and the accept button on the screen will be unselectable until you select another key / button for that function.



Credits

Go here to catch a glimpse of photo-realistic portraits of the people responsible for bringing you Worms Blast.

Language

Change the language that Worms Blast in-game text uses. Choices are English, French, German, Spanish and Italian.

High Scores

View the High Score table to see who is King of the Single Player **TOURNAMENT** modes.

Game Mechanics

Land Blocks

Block Types.

There are several different land block types in Worms Blast.

Standard Blocks



These are the most common blocks in the game. They can be destroyed by most weapons and follow colour coding rules (read on for details)

Dead Blocks



These blocks are grey to start with. To destroy them, you must first colourise them and then hit them again with the same colour (see colour coding for more details).

Anchor Blocks



Anchor blocks do not fall into the water when unattached to other blocks, you cannot destroy them (except with Dynamite) and they prevent other blocks falling when attached to them.

Bouncy Blocks



Bouncy blocks are also indestructible. However, weapons fired at bouncy blocks will simply bounce away. Be careful when firing at these blocks as shots can frequently bounce back and hit your boat.

Rainbow Blocks



These blocks can be destroyed by any colour. There is no need to colour match the block to the weapon you have to destroy it.

Stars



Stars appear in the landblocks and must be shot free i.e. shoot the blocks underneath to let the Star fall into the water for you to collect. Once in the water, Stars will stay afloat for a short while before sinking. Stars can also be exploded.

Crates



Contain the special weapons in the game. Shooting the blocks around them makes them fall into the water. Collect them before they sink. Crates can also be shot and exploded.

HINT: The land blocks follow certain rules:

- Generally, unsupported landblocks will fall into the water.
- If you are in the way and get hit, they will cause damage to your boat
- They follow a colour coding destruction system (see below)
- Landblocks around the waterline will bounce your boat away if you sail into them, causing damage to your boat
- Landblocks touching your head whilst still joined to the main land body will quickly sink your boat. It is highly advisable to keep the landblocks from touching you by destroying them with your weapons
- It is a good tactic to attack your opponents landblocks through the divider. What happens to them depends on what colour they are. For more information, read on...
- Chain reactions happen when there are like coloured blocks attached to one that you have just exploded. Any same coloured blocks touching one that has just exploded will also explode

Colour Coding

You will notice that the land blocks in Worms Blast are brightly coloured. You will also notice that most of the weapons available are also of a particular colour. To destroy the land blocks above



you, you have to match the colour of your weapon to the colour of the land block you are attacking. If you fire a shot at the land and the colours don't match, the land hit (and the surrounding blocks) will be recoloured to the colour of the weapon fired. For example, firing a GREEN bazooka shell at a green land block will cause it to explode. Firing a RED bazooka shell at a green land block will cause the landblock to change colour to RED. This may seem confusing at first, but it's quite straight forward once you're in a game. In multiplayer games, fire non-matching coloured weapons at your opponents blocks to turn them into dead blocks.

Weapon Types

Each player has a basic weapon that is always available. This weapon is the trusty BAZOOKA. Other weapons are available from CRATES that are scattered throughout the game embedded in the land.

Firing weapons is simple. Either press and hold the FIRE button to set the power the weapon will be fired at or simply press FIRE to activate the weapon (which method depends on the weapon).

The colour of the weapon fired (if it is a weapon that you can attack your land with) is shown on the weapon icon on the HUD and also on your crosshair.

To toggle between your standard weapon and your special weapon, press the SWAP WEAPON button and fire it with the standard FIRE button

Standard Weapon



Bazooka

The standard weapon in your arsenal, this weapon is always available. The Bazooka is a coloured weapon and you have to follow the COLOUR CODING rules when firing it at your land blocks. Line up your shot, press the fire button and keep it pressed down until the required power is reached. Releasing the fire button results in the weapon being fired. The Bazooka explodes immediately on contact with the land (or your opponents boat!).

Special Weapons



Dynamite

Fired like the Bazooka, the dynamite has a 5-second fuse that starts as soon as the weapon is available. Dynamite sticks to the land as soon as it comes into contact with it. Dynamite destroys any Land Blocks, Crates or Stars in its blast radius regardless of the colour.

HINT: Quickly fire the Dynamite once activated, if you hold onto the dynamite for the full 5- seconds it will explode in the boat and cause damage



Grenade

Also fired like the Bazooka, Grenades like Dynamite have a 5 second fuse that starts as soon as you select the weapon.

Grenades follow COLOUR CODING rules. However, the Grenade will not do damage to any land block, it will only change the colour of all land blocks in its Blast Radius to that of the Grenade. You can detonate the Grenade at any time after firing it by pressing the FIRE button again. If you do not detonate the grenade five seconds after the Grenade has been selected, the grenade will explode by itself.



Shotgun

The shotgun is a 2 shot weapon, you simply aim your crosshair and press FIRE to activate. When selected, you have

2 shots to take before you can switch weapon. The Shotgun

fires in a straight line, has a small blast radius and follows the COLOUR CODING rules.



Laser Beam

The Laser Beam when fired will cut through any land you point it at. You also get 2 shots with it, making it a very tasty weapon indeed.



Sea Monster

Unleash the Sea Monster on your opponent and watch them wriggle. The Sea Monster will rise from the water and grab hold of their boat. All is not lost if you are subject to a Sea Monster attack - rapidly press the FIRE button to release yourself from its grip.



Water Balance

Serves as an equaliser. It changes the water level on both sides of the divide so that they are exactly the same.



Boat Repair

When used, a health buoy appears at the side of the screen. Sail into it to replenish your boat's health.



Piranha

Using this will cause all your opponent's sea life to change to boat-ravaging Piranhas. Watch as the once-friendly sealife savage your opponent's boat.



Fish Food

Dropping fish food into the water will cause extra fish to be added to your water.



Torpedo

Fire the Torpedo to launch a self seeking underwater homing missile at your opponent

HINT: Fish will act as a shield to this type of weapon, keep that in mind and treat the fish with respect



Mine

Trigger the Mine weapon to send a proximity Mine over to your opponent's side. Mines sent your way have a delayed detonation setting that is triggered by your boat banging into them. The Mine will explode shortly after coming into contact with your boat. Beware: if a Mine hits you whilst surfacing, it will more than likely detonate instantly.



Weather Balloon

This instantly calls up a weather effect. Weather can be either an advantage to you or a disadvantage to both players.



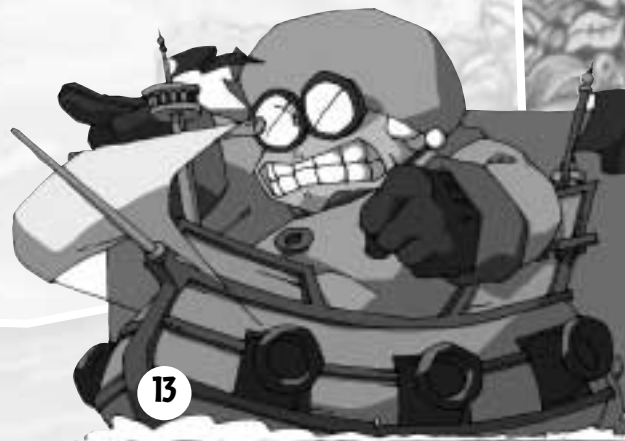
Reverse Controls

This reverses your opponents controls for a period of 10 seconds.



Timestop

When this is used up your opponent is stuck still and can't move for 10 seconds.





Sailors Delight

Dropped into your opponents water, this roughs things up, making their water rather choppy.



Shield

Activate to enable a Shield around your boat. Stops any damage happening.



Double Damage

The next shot the player makes will do double the damage it would normally do or double the blast radius.



Speed Up

Does exactly what it says on the tin, speeds up all aspects of the players' boat, lasts for 10 seconds.



Ghost Crates

Activate this to drop any crates visible in your land into your water.

Water

The water in Worms Blast affects gameplay in several ways. At the beginning of a MULTIPLAYER game your water level will be the same as your opponents. Things can happen to your water however. The level can raise (if you accidentally fire one of your weapons into your half of the game area) and lower if you collect one of the STARS embedded in the landscape. Explosions and special weapons can make the water get choppier i.e. rock your boat about more making it harder to aim your weapon. There are also several weapons found in crates that are water based, these appear from under the water and sometimes without much warning; it pays to pay attention to what lurks in the murky depths. If you look closely, you will also notice that as you play your water will start to fill up with fish and other assorted sea life...

HINT: Fish appear in your water over time and are based on how much you score - the more you score, the more fish you collect.

More than looking pretty, fish have one main advantage - they will get in the way of most underwater weaponry fired at you by your opponent.

Beware: It is easy to kill your hard earned fish by hitting them with your own weapons.



Divider

In multiplayer games, the game area is split in two by a wooden divider. This divider reaches from just under the water line up to the top area of the screen. Weapons will bounce off the divider so be careful. From time to time, the divider will open allowing you to attack your opponent, or attack their land. If you run into the divider, your boat will be bounced away without causing any damage.



In-game heads up display (the HUD)

At the bottom of the game screen you will notice several icons. These icons give you important information about the game state.

The most important icons are the 3 weapon icons. The large one denotes the current weapon and its colour (note: the weapon's colour is also shown on the aiming crosshair). The smaller icon to the left denotes which SPECIAL WEAPON you have ready for use (this can be made ready to fire by pressing the SWAP WEAPON button). The smaller icon to the right shows the players next STANDARD weapon in the queue and what colour it is. In single player PUZZLE games, icons will appear giving you the status of your progress towards completing the mission objective. In single player TOURNAMENT games, your progress is shown by various icons and numbers (for example a Target icon followed by a number denotes how many targets you have hit so far in that game).

Blast Mode

You will notice that when you destroy sections of land blocks, small objects fall from them. If you collect enough of these objects in one go (i.e. when you've performed a reasonable sized combo explosion), a letter will light up on the BLAST logo. Collect different coloured land objects to highlight each letter. When BLAST is fully lit up, BLAST MODE is activated. It is not necessary to say what happens, when it happens you will know about it.

For reference: B is lit by collecting RED objects, L by YELLOW objects, A by PURPLE objects, S by GREEN objects and T by ORANGE objects.



Game Characters

Initially you have a choice of six characters. Each character has their own individual characteristics and their own boat. The characters you can choose to play as all play differently from each other: some are fast, but lightly armoured; some are slow but take a lot of damage while others are more rounded and good in all areas without excelling at anything.

Choose the character that suits your own style of play.

Character Profiles

Boggy B

Ever since Boggy was a young worm he has had an alarming tendency to blow up almost anything that moves. He is an excellent all rounder and is adept at using all the weapons at his disposal. Boggy is the best character for beginners.



Suzette

Suzette is the younger sister of the infamous Boggy B. Like her brother, she is an excellent all rounder and is adept at using all the weapons at her disposal. She can't take as much damage as her brother, but she moves quicker in order to get away from danger. Suzette is an excellent character for beginners.



Chuck

Being of low intelligence it is never quite clear what is going on in the Pigeon's tiny mind. Sick and tired of just being the messenger, the message from the pigeon is that he means business.

Plays hard and also plays dirty.

Chuck is the fastest at aiming and is maybe a little slow at moving, therefore Chuck is a character recommended for intermediate players.



Ethel

How this particular escapee from the old peoples home got involved in such a game of mass destruction is not really known. Don't let her age and seeming fragility fool you, she's as tough as old boots. Underestimate her at your peril! Quick and hardy, Ethel is a good all rounder but her large boat makes her a bigger target. Ethel is a character recommended for intermediate players.



Calvin

Don't let the Sheep's soft fluffy appearance and seemingly bewildered expression goad you into thinking that this one will let you off lightly, he is more highly evolved than all of his farmyard peers. Although this sheep is not a huge fan of the life on the ocean waves, he represses his super flying powers so he can't be accused of cheating. Calvin moves incredibly fast, but he really can't take much damage. Calvin might be more difficult to control, but his plus points more than make up for it. Calvin is a character recommended for advanced players.



Stavros

The Skunk was without friends before joining the Worms' army, after a few victories in battle his potential was soon realised! Truly is silent but deadly. Stavros is a very tough character with quick aiming speeds. His overall lack of speed is his Achilles heel. Definitely a character recommended for advanced players.



Credits

Artists

David Smith - Lead Artist
Mike Green
Patrick Romano
Andrew Morris
Rico Holmes
Jan Ruud

Paul Kilburn - Producer, Design
Mark Baldwin - Associate Producer, Design

Programmers

Charles Blessing - Lead
Martin Swaine
Paul Scargill
Andreas Tadic
Andy Clitheroe
Stefan Boberg
Phil Carlisle

Sound and Music

Bjorn Lynne

Martyn Brown - Creative Director

Voice Characterisations
Outsource Media & Audiogodz

QA

Adrian Evans
Kelvin Aston
Jax Li
John Egginton
Andy Aveyard
Brian Fitzpatrick
Lee Varley
Paul Field - QA Manager

Design

John Eggett
Paul Dunstan
Grant Towell
Kevin Carthew
John 'MonkeyKicks' Dennis

Project Management

Producer
Lee Keane

Studio Manager

Darren Melbourne

Testing:

Worldwide Test Manager
Eric Tremblay

Test Department Manager:

Cristian Giuglea

Lead Tester:

Costel Apopii

Testers:

Banica Mihai
Sebastian Burtan
Adrian Iacob
Banica Nelu

Localization Director

Coralie Martin

Project Manager

Xavier Vibert

Publisher: Ubi Soft Entertainment:

CEO

Yves Guillemot

International Production Director

Christine Burgess-Quemard

International Content Director

Serge Hascoet

Approval Coordinators:

Europe:

Nikola Milisavljevic,

US:

Willie Wareham

European Marketing

European Marketing Director

Laurence Buisson-Nollent

European Group Manager

Thomas Petersen

European Brand Manager

Remi Perreault

Local Marketing Managers

Germany:

United Kingdom:

Scandinavia:

Spain:

Italy:

France:

Netherlands:

Belgium:

EMEA:

Rémi Perreault, Thomas Petersen

US Marketing

Corey Fong

Special Thanks to Rick Stirling and James Fraser.

Customer Support

Phone this number if you become stuck:

01924 123456

or email this address:

support@team17.com

or go to this web page:

wormsblast.team17.com

Andreas Balfanz

Amanda Butt

Soren Laas

Antonio Rabanera

Giulia Pasquariello

Nicolas Oyarbide

Michiel Verheijdt

Evelyn De Vooght

TECHNICAL SUPPORT

Online Support Options

Ubi Soft offers on-line support options for software products. One of these is our website at: <http://www.ubisoft.co.uk/support/>.

If you have a specific problem that is not addressed on our site, you can send your question to us via e-mail at: techsupport@ubisoft.co.uk.

Please be as specific as you can be about the problem you are experiencing and have the below details available:

- The name of the manufacturer of your computer system
- The brand and speed of the processor
- How much RAM you have
- The version number of windows you are using (if you aren't sure, right-click on the my computer icon on your desktop and select 'properties')
- The manufacturer name and model number of your video card, modem, and sound card.

Other Support Options

You can also contact Ubi Soft Technical Support by phone and fax. When you call, please have all of the above mentioned information ready.

Ubi Soft Technical Support: **0870 739 7670**
Hours: Monday To Friday 8.00am – 11.00pm GMT

Ubi Soft Hintline: **0906 906 0200**

Mailing Address: Ubi Soft Entertainment Ltd.
Chantrey Court
Minorca Road
Weybridge
Surrey
KT13 8DU